

# Develin Creek Project Factsheet

Australia's Next Copper & Gold Developer...



## PROJECT: Develin Creek



**CURRENT RESOURCE: 3.2Mt @ 1.61% CuEq for 51,360t CuEq**



**OWNERS:**  
QMiners Limited (51%) & Zenith Minerals (49%)

**OWNERSHIP:**  
Rights to 100%



**COMMODITY:**  
Copper & Zinc



**DEPOSIT TYPE:**  
Volcanic Hosted Massive Sulphide Deposit (VHMS)



**TENURE:**  
EPM 17604 & EPM 16749



**PROPOSED MINE TYPE:**  
Open Pit & Underground

## Project Overview

The Develin Creek Project is located approximately 90km west of Rockhampton in Queensland. The Project consists of two tenements, EPM 17604 and EPM 16749 for a total area of 272km<sup>2</sup>.

On 28th August 2023, QMiners acquire an initial interest of 51% of Develin Creek from Zenith Minerals Limited (ASX:ZNC) and retains the right to acquire the remaining 49% interest within 12 months.

## Exploration Strategy

QMiners plans to complete infill drilling to improve resource confidence, step out drilling to assess the potential for a larger resource and development drilling comprising metallurgy and geotechnical drilling to determine the deposits suitability for potential future mining.



Figure 1: Mt Chalmers & Develin Creek project locations amongst regional infrastructure.



**JORC RESOURCE:**  
3.2Mt @ 1.61% CuEq



**CONTAINED METAL:**  
51,360t CuEq



**JORC CATEGORY:**  
47% Indicated



**Cut Off Grade:**  
0.5% CuEq



**HISTORIC DRILLING:**  
224 holes for 44,228m

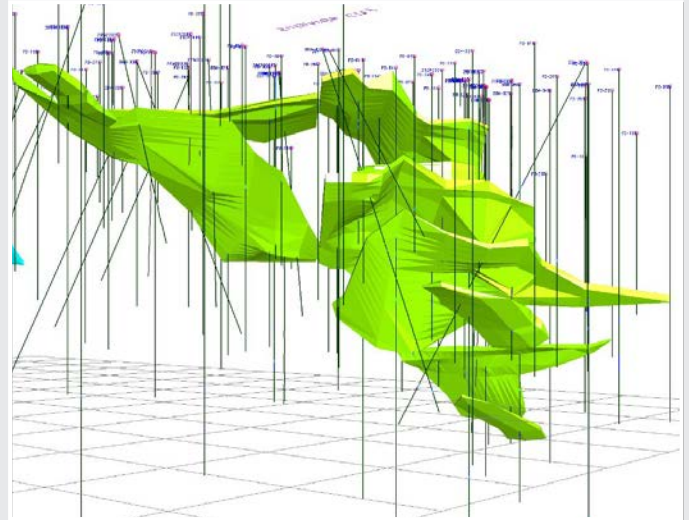


Figure 2: Cross section of the Sulphide City deposit at Develin Creek.

## Current Resource<sup>1</sup>

Resource Category	Tonnes (Mt)	Cu (%)	Zn (%)	Au (g/t)	Ag (g/t)
Indicated	1.5	1.21	1.25	0.18	7.1
Inferred	1.7	0.92	1.20	0.16	4.8
<b>Total:</b>	<b>3.2</b>	<b>1.05</b>	<b>1.22</b>	<b>0.17</b>	<b>5.9</b>

<sup>1</sup> [QMines Delivers Fifth Resource At Develin Creek](#), 18<sup>th</sup> September 2023.

## Project History

Mineralisation at Scorpion, Window and Sulphide City were discovered and initially drilled to 50m spacing by Queensland Metals Corporation (QMC) in the early 1990s. Eventually the project was relinquished, and the current tenement granted to Icon Resources.

Icon vended the project into Fitzroy Resources as part of an Initial Public Offering in 2010. Fitzroy undertook a small drilling program to extend the known resource in 2011.

Verification drilling by Zenith Minerals using RC and diamond drilling occurred in 2014, 2021 and 2022.

## Project Geology

The Develin Creek project consists of several Volcanic Hosted Massive Sulphide (VHMS) copper-zinc deposits.

The Develin Creek project covers part of the Rookwood Volcanics which form a narrow, discontinuous north-south orientated belt that extends the length of the project and hosts the known base metals mineralisation. The Rookwood Volcanics are variably exposed and concealed by lateritised tertiary sediments, and younger quaternary deposits.

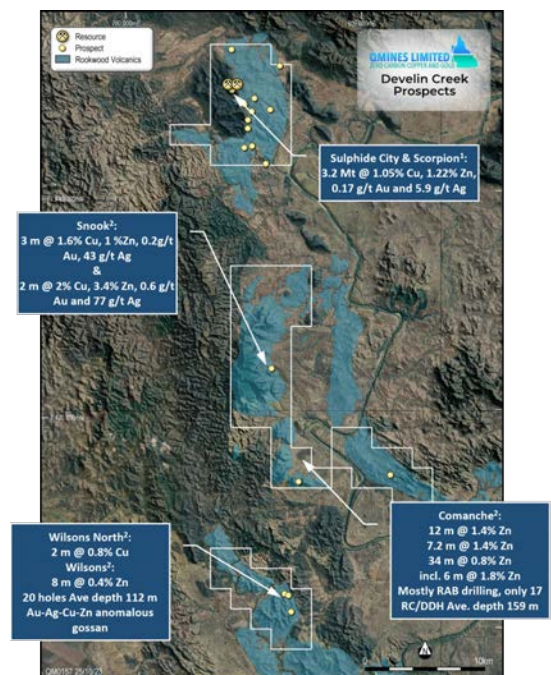


Figure 3: Develin Creek Prospects.

## Disclaimer

---

This document is confidential and may not be reproduced, redistributed or passed on, directly or indirectly.

This document is neither a prospectus nor an offer to subscribe for Shares.

QMines Limited ACN 643 212 104 (QMines) and its directors, employees and consultants make no representations or warranty as to the accuracy, reliability or completeness of this document, and have no liability, including liability to any person by reason of negligence of, or contained in or derived from, or for any omissions from this document, except liability under statute that cannot be excluded.

This document contains reference to certain targets and plans of QMines which may or may not be achieved. The performance of QMines may be influenced by a number of factors, uncertainties and contingencies, many of which are outside the control of QMines and its directors, staff and consultants.

The information in this report that relates to mineral resource estimation is based on work completed by Mr. Stephen Hyland, a Competent Person and Fellow of the AusIMM. Mr. Hyland is Principal Consultant Geologist with Hyland Geological and Mining Consultants (HGMC), who is a Fellow of the Australian Institute of Mining and Metallurgy and holds relevant qualifications and experience as a qualified person for public reporting according to the JORC Code in Australia. Mr Hyland is also a Qualified Person under the rules and requirements of the Canadian Reporting Instrument NI 43-101. Mr Hyland consents to the inclusion in this report of the information in the form and context in which it appears.

## Contact

---

### QMines Limited (ASX:QML)

**Registered Address:** Suite J, 34 Suakin Drive, Mosman NSW 2088

**Postal Address:** PO BOX 36 Mosman NSW 2088

**Website:** [www.qmines.com.au](http://www.qmines.com.au)

**Telephone:** +61 (2) 8915 6241

**Peter Nesveda,** Investor Relations

**Andrew Sparke,** Managing Director

**Email:** [info@qmines.com.au](mailto:info@qmines.com.au)

**Email:** [peter@qmines.com.au](mailto:peter@qmines.com.au)

**Email:** [andrew@qmines.com.au](mailto:andrew@qmines.com.au)